

## Instructions for shortening ceramic bracelets

### 1. Determining the required bracelet length

To shorten the bracelet you need the following tools:

- a tape measure
- a punch with a pin diameter of 0.8 mm, pin length of c. 15 mm and a plastic protective ring (see picture 1.1)
- a small hammer
- a base
- a support

Run the tape measure around the customer's wrist and measure the circumference. To ensure that the bracelet later sits comfortably around the customer's wrist, be sure not to pull the tape measure too tight. To enable you to fit the bracelet even more accurately to the wrist circumference there is a short link within the bracelet.

Using the table below, you can now see by how many ceramic links the bracelet needs to be shortened. Example: the complete bracelet is 20cm long, while the measured circumference of the customer's wrist is 17.1cm. 4 ceramic links + 1 short link therefore need to be removed to achieve a bracelet that fits well.

Bracelet links	Circumference
26 links and 1 short link	20.00 cm
26 links	19.65 cm
25 links	19.01 cm
24 links	18.37 cm
23 links	17.73 cm
22 links	17.09 cm
21 links	16.45 cm
20 links	15.81 cm

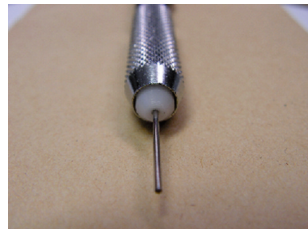
**NB:** Please ensure that the ceramic links get removed evenly from either end of the bracelet so that the clasp remains in the middle.

Let the customer try out the bracelet to see what it feels like to wear. If the bracelet is still much too loose, continue to shorten it at alternate ends until you achieve the perfect fit. If, on the other hand, the bracelet is too tight, you can alternately add ceramic links back on to one end and then the other.

### 2. Removing bracelet links



Picture 1



Picture 1.1

To remove the locking pins you need a punch with a diameter of 0.8mm, a pin length of c. 15mm and a plastic protective ring.



Picture 2

Use a stable base with a hole to receive the pin that you are going to push out. As you push the pin out, please position the punch centrally above it. This avoids any nicks on the ceramic end pieces.



Picture 3



Picture 3.1

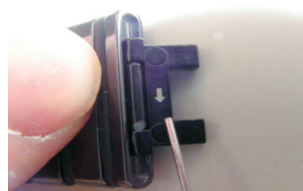
Take out the pin.

Please note that there is a sleeve fitted inside each of the clasp's lugs.



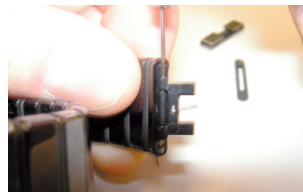
Picture 4

The ceramic end piece now needs to be pulled out. Pulling it out can occasionally be a little difficult. In such cases, and only then, please use an appropriate tool (e.g. a flat screwdriver).



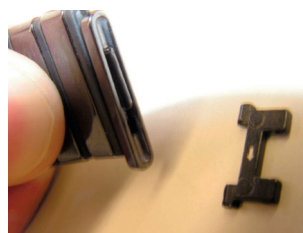
Picture 5

When the ceramic end piece and the PU part have been removed, the closing link / link is visible. There are marker arrows on the underside of the links.



Picture 6

The pin now needs to be pushed out in the direction of the arrow. This does not require any great force. You do not need to use a hammer.



Picture 7

Now you can pull off the next ceramic link and the PU part. Repeat this procedure until you have achieved the required bracelet length.



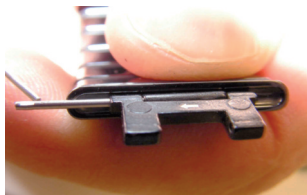
Picture 8

View of the order of pieces after disassembly.

## Instructions for shortening ceramic bracelets

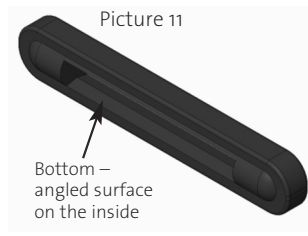
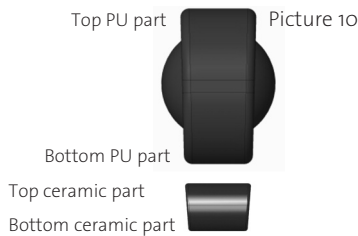
### 3. Adding bracelet links

If you have taken off too many links or you need to lengthen the bracelet, it is put together as follows.



Picture 9

Position the link (the marker arrow must be on the inside of the bracelet) up against the bracelet. Please note that there is an embossed fastening surface on one end of the pin.



**CAUTION!**  
 The PU part as well as the ceramic part are not symmetrical! The narrow side of each component must be on the inside of the bracelet, the wider one on the top of the bracelet (see 3D views).

Otherwise you will be unable to fit the subsequent parts correctly. Now push the ceramic end piece onto the link. You can also identify the bottom of the PU part by its angled opening (pictures 10 and 11).



Picture 12

Manually insert the pin into the link in the opposite direction to the arrow. The end with the pin's fastening surface must be at the top. It is helpful if the link is rested on a support. Use an appropriate punch or another suitable tool to push the pin in.



Picture 13

Run the pin through the newly fitted link, then through the link before it and then again through the new link. The pin must be pushed in counter to the direction of the arrow.



Picture 14

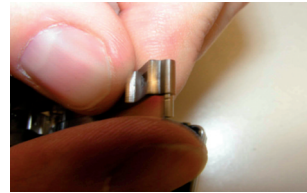
Now push the pin fully in. When you are done, the pin must no longer protrude, as otherwise you will not be able to push the next link on correctly.



Picture 15

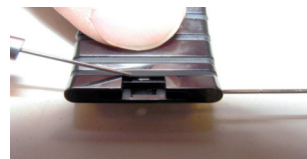
Do not allow the ceramic parts to become damaged by the tool that you use to push the pin in (e.g. due to the tool slipping). Note that you have to use the end link as the final link of the bracelet.

### 3. Fitting the ceramic end pieces



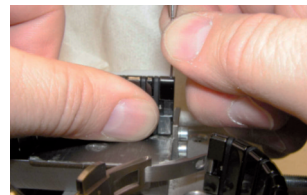
Picture 16

Please put the two sleeves back into the clasp lugs.



Picture 17

Put the PU part onto the link.



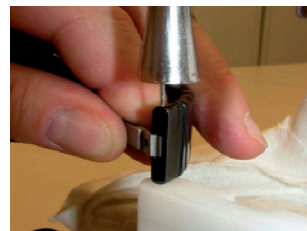
Picture 18

Now insert the closure pin in the opposite direction to the arrow. Run the pin through the ceramic end piece, then through the sleeve and then through the end piece again.



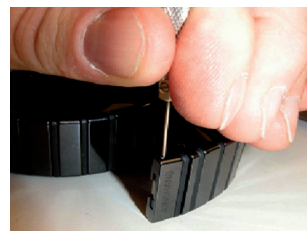
Picture 19

The picture shows the closure pin's correct assembly procedure.



Picture 20

Using a hammer, push the pin in further.



Picture 21

Now to push it in the final bit, use a punch once again. The pin's position must be symmetrical within the ceramic end piece. Please take care here too: the ceramic end piece must not get damaged!